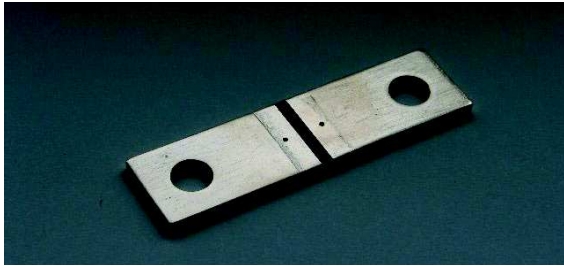
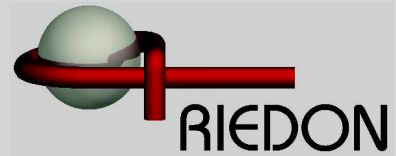


RCS Series

Current Sensing Shunts
77 Amp - 173 Amp

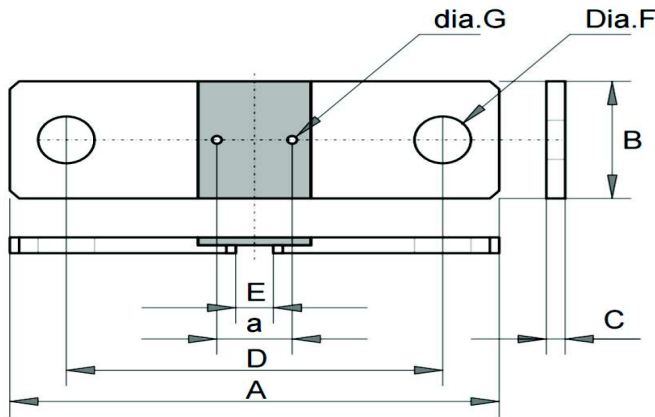


- 3W Power
- 77 Amp to 173 Amp
- 0.1 - 0.5 mOhm Resistance Values
- Simple 4-port Kelvin Structure
- All Welded Construction
- Common Applications: Switchgear, Welding, Power Supply

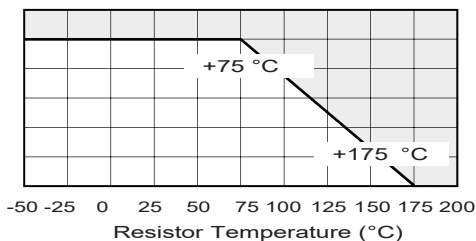
SPECIFICATIONS			
Type	Resistance (mOhm)	Current (A)*	Max Current (A)*
RCS1	0.1	173	865
RCS2	0.2	122	610
RCS3	0.3	100	500
RCS4	0.4	86	430
RCS5	0.5	77	385

*Note: Current & Max current based on bus-bar mounting

SPECIFICATIONS	
Resistance Values	0.1 to 0.5 mOhm
Tolerance	±1% or ±5%
TCR	+0 to +100 ppm
Power	3W
Max Power	100W / 0.15
Storage Temperature	-55 to +125 C
Operating Temperature	-55 to +175 C
Materials	Contact: Ni plated Cu Element: CuMnNi



Power Derating
% Rated Power



Dimension	(mm)
A	55
B	15
C	2
D	40
F	6.2
G	0.8
E (0.1 mOhm)	7
E (0.2 mOhm)	9.6
E (0.3 mOhm)	12
E (0.4 mOhm)	14.5
E (0.5 mOhm)	17.5

Ordering Information

Part Description: Part Type - OHM - Tolerance

Example: **RCS1 - 0.1 OHM - 5%**