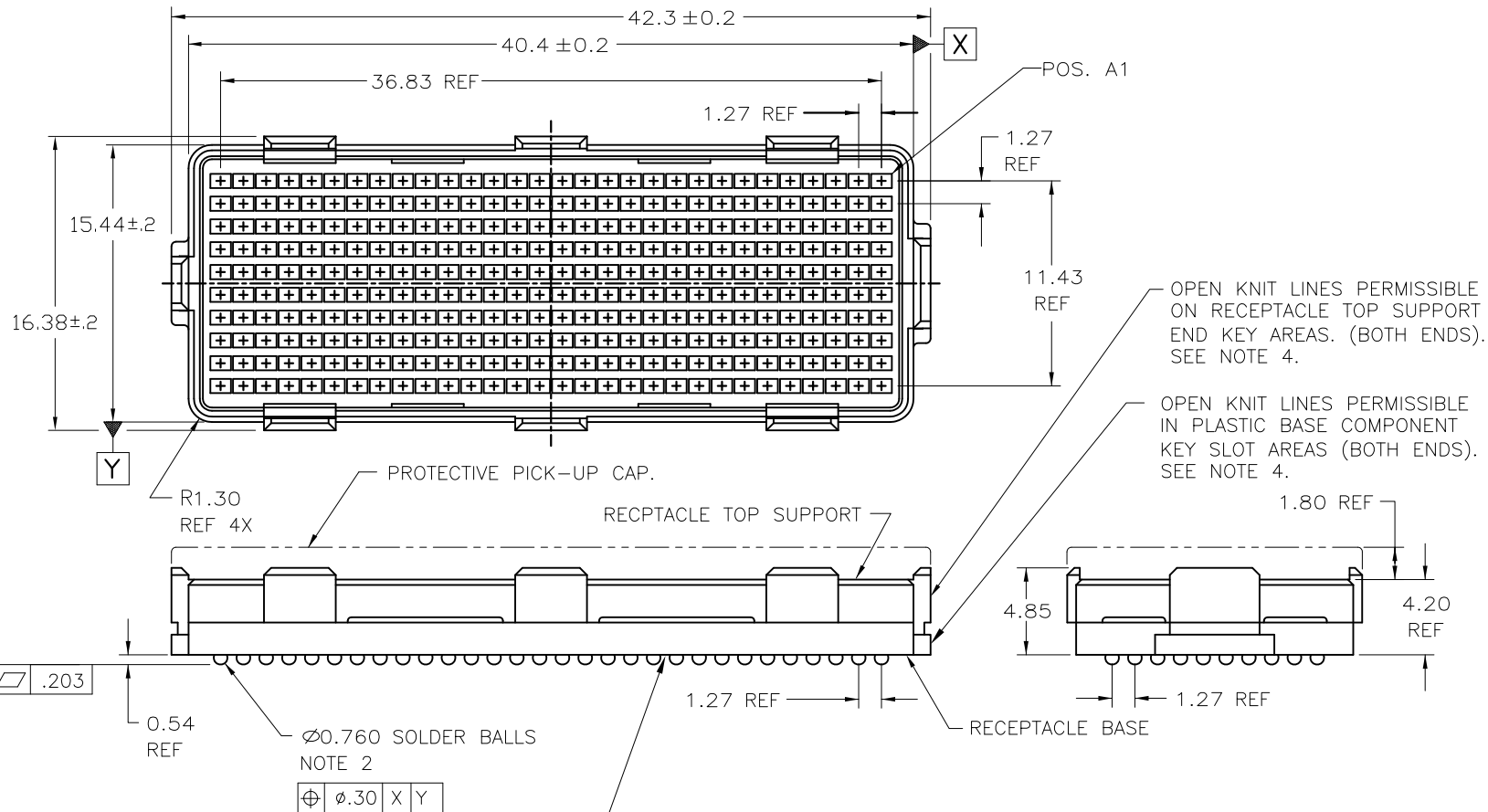


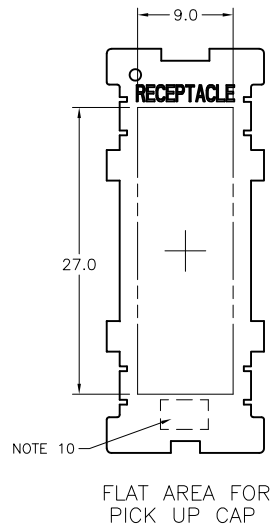
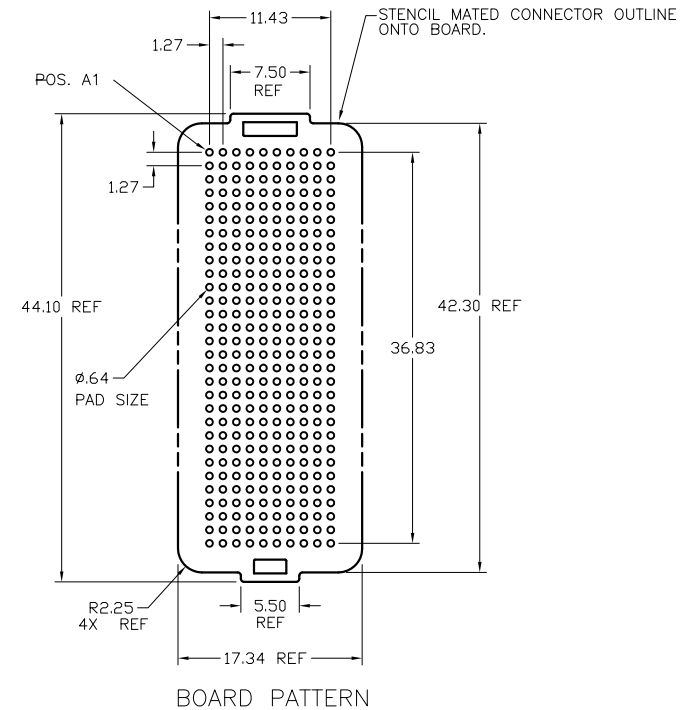
PRODUCT NUMBER
SEE TABLE-SHEET 2



CONTINUOUS OPEN KNIT LINE CRACKS (TRAVERSING THE ENTIRE BODY LENGTH OF THE CONNECTOR) WHICH CAUSE CRITICAL-TO-FUNCTION DIMENSIONAL CHANGES THAT AFFECT THE CONNECTORS MECHANICAL ALIGNMENT FEATURES ARE NOT PERMISSIBLE. SEE NOTE 4.

mat'l. code				surface		tolerance		projection		product family	
SEE NOTE 1				ASME Y14.5		ASME Y14.5		MM		MEG-ARRAY	
ltr	ec'n no	dr	date	angles	fil	fin	mm	mm	mm	mm	title
H	V06-0560	LP	2006-07-18			X*3					5.5mm RECEPTACLE ASSEMBLY
J	V06-1173	LP	2006-12-11			XX*13					10 X 30 = 300 POSITIONS
K	V11-0030	HTB	2011-06-15	0° ±2'		XXX*051		scale	3:1		dwg no
L	V12-0030	SJ	2012-08-06		dr	D. WAUGHEN	1999-02-23				sheet 1 of 4
M	V12-0042	DCH	2012-11-15		enfr	D. HARPER	1999-02-23				size
-	-	-	-		chr	D. HARPER	1999-02-23				84502
G	V04-0940	VS	2004-10-18		appd	D. HARPER	1999-02-23				A4
											type
sheet	revision	M	M	M	M						CUSTOMER Drawing
index	sheet	1	2	3	4						

PRODUCT NUMBER	PICK-UP CAP (NATURAL OR BLACK COLOR)	CONTACT PLATING AND THICKNESS	SOLDER BALL	NOTES
84502-001	YES	15μ" (0.38μm) Au	SnPb	
84502-001LF	YES	15μ" (0.38μm) Au	LEAD FREE	6
84502-091	YES	15μ" (0.38μm) GXT	SnPb	
84502-091LF	YES	15μ" (0.38μm) GXT	LEAD FREE	6
84502-101	YES	30μ" (0.76μm) Au	SnPb	
84502-101LF	YES	30μ" (0.76μm) Au	LEAD FREE	6
84502-191	YES	30μ" (0.76μm) GXT	SnPb	
84502-191LF	YES	30μ" (0.76μm) GXT	LEAD FREE	6
84502-201	YES	50μ" (1.27μm) Au SPECIAL	SnPb	7 AND 8
84502-201LF	YES	50μ" (1.27μm) Au SPECIAL	LEAD FREE	6, 7 AND 8
84502-291	YES	50μ" (1.27μm) GXT SPECIAL	SnPb	7 AND 8
84502-291LF	YES	50μ" (1.27μm) GXT SPECIAL	LEAD FREE	6, 7 AND 8
84502-A01	YES	30μ" (0.76μm)	SnPb	9
84502-A01LF	YES	30μ" (0.76μm)	LEAD FREE	6 & 9
84502-301	YES	15μ" (0.38μm) Au SPECIAL	SnPb	9
84502-301LF	YES	15μ" (0.38μm) Au SPECIAL	LEAD FREE	6 & 9
84502-401	YES	30μ" (0.76μm) Au SPECIAL	SnPb	9
84502-401LF	YES	30μ" (0.76μm) Au SPECIAL	LEAD FREE	6 & 9
84502-501	YES	Au SPECIAL	SnPb	7, 8 & 9
84502-501LF	YES	Au SPECIAL	LEAD FREE	6, 7, 8 & 9



mat'l. code		surface		tolerance		projection		product family			
SEE NOTE 1		ASME Y14.5		ASME Y14.5				MEG-ARRAY			
ltr	ecn no	dr	date	tolerances unless otherwise specified							
M				angles			MM		title 5.5mm RECEPTACLE ASSEMBLY 10 X 30 = 300 POSITIONS		
				0° ±2'			scale 2:1				
				dr	D. WAUGHEN	1999-02-23			dwg no	sheet 2 of 4	size
				engr	D. HARPER	1999-02-23			84502	A4	
				chr	D. HARPER	1999-02-23			type CUSTOMER Drawing		
				appd	D. HARPER	1999-02-23					
sheet index	revision sheet										



Copyright FCI



FCIconnect.com

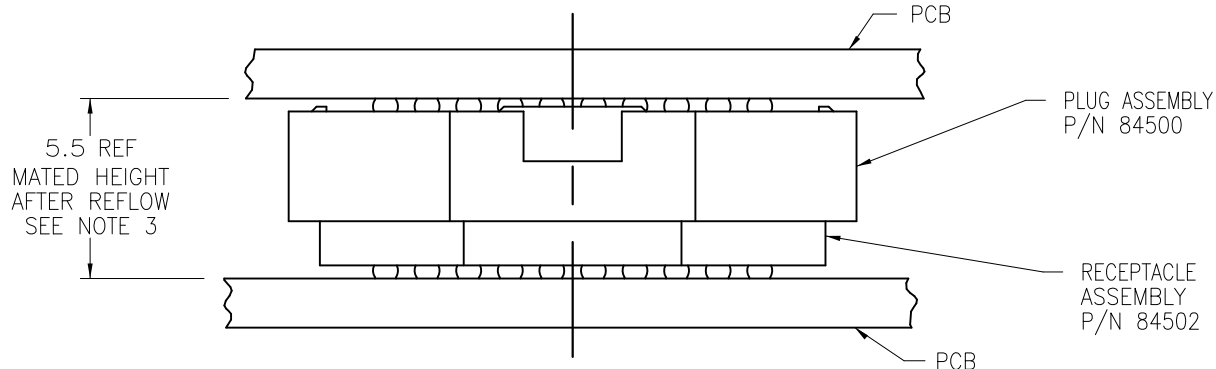


1 | 2

3 |

4

PRODUCT NUMBER
SEE TABLE-SHEET 2



MATED HEIGHT AFTER REFLOW IS BASED ON $\phi.64$ mm PAD (METAL-DEFINED)
AND .13mm SOLDER PASTE STENCIL THICKNESS. SEE NOTE 3.
END VIEW - MATED CONNECTORS

NOTES:

1. MATERIAL:

HOUSING: LCP
CONTACT: COPPER ALLOY

PLATING:

CONTACT: (SEE TABLE ON SHEET 2)
SOLDER BALL: (SEE TABLE ON SHEET 2)
EUTECTIC SnPb OR LEAD FREE
95.5Sn/4Ag/0.5Cu

7. PLATING FOR INDICATED -2XX SERIES PRODUCT NUMBERS MEET THE REQUIREMENTS OF GR-1217-CORE, CENTRAL OFFICE ENVIRONMENT, (25 YEAR LIFE EXPECTANCY). AND INCLUDES SPECIAL CONTACT GEOMETRY.

2. SOLDER BALLS WILL NOT BE PERFECT SPHERICAL SHAPE DUE TO REFLOW ATTACHMENT.

3. MATED HEIGHT EFFECTED BY CUSTOMER'S PCB PAD SIZE, PLATING, SOLDER REFLOW PROFILE, & SOLDER PASTE.

4. KNIT LINE: SLIGHT VISIBLE MARKS (USUALLY A LINE) INDICATING THE DIRECTION AND MEETING POINT OF PLASTIC RESIN FLOW FRONTS TRAVELING AROUND ANY OBSTRUCTIONS TO THE RESIN FLOW VIA THE REQUIRED MOLD TOOLING.

5. FOR PROPER APPLICATION FOLLOW FCI APPLICATION SPECIFICATION GS-20-033 LEAD FREE SOLDER BALLS WILL NOT SOLDER PROPERLY IN A LEADED SOLDER PROCESS DUE TO A HIGHER REFLOW TEMPERATURE. LEAD FREE PRODUCT IS THEREFORE NOT BACKWARDS COMPATIBLE WITH LEADED OR SOME SOLDERING APPLICATIONS. REFERENCE FCI APPLICATION SPECIFICATION

6. THIS PRODUCT MEETS EUROPEAN UNION DIRECTIVES AND OTHER COUNTRY REGULATIONS AS DESCRIBED IN GS-47-0004 PRODUCT MEETING THIS DIRECTIVE IS IDENTIFIED IN THE LOT CODE NUMBER MARKED ON EACH PART BY HAVING AN "X" IN THE SEVENTH CHARACTER POSITION.

9. 84502-A01 AND -A01LF ARE CUSTOMER SPECIALS.

10. CURRENT COMPANY LOGO TO BE VISIBLE IN APPROXIMATE AREA SHOWN.

12. A SYMBOL WILL BE NEXT TO ANY DIMENSION, NEW VIEW OR NOTE WHICH HAS BEEN MODIFIED WITH THE CURRENT DRAWING REVISION

mat'l. code		surface		tolerance		projection		product family	
SEE NOTE 1		ASME Y14.5		ASME Y14.5				MEG-ARRAY	
ltr	ecn no	dr	date	tolerances unless otherwise specified		MM		title	
M				angles	X*3	5.5mm		5.5mm RECEPTACLE ASSEMBLY	
				linear	.XX*.13	scale 5:1		10 X 30 = 300 POSITIONS	
				0° ±2'	.XXX*.051	FCI		dwg no	
				dr	D. WAUGHEN	1999-02-23		sheet 3 of 4	
				engr	D. HARPER	1999-02-23		size	
				chr	D. HARPER	1999-02-23		84502	
				appd	D. HARPER	1999-02-23		A4	
sheet index		revision sheet						type	
								CUSTOMER Drawing	

form: A4mmXlc

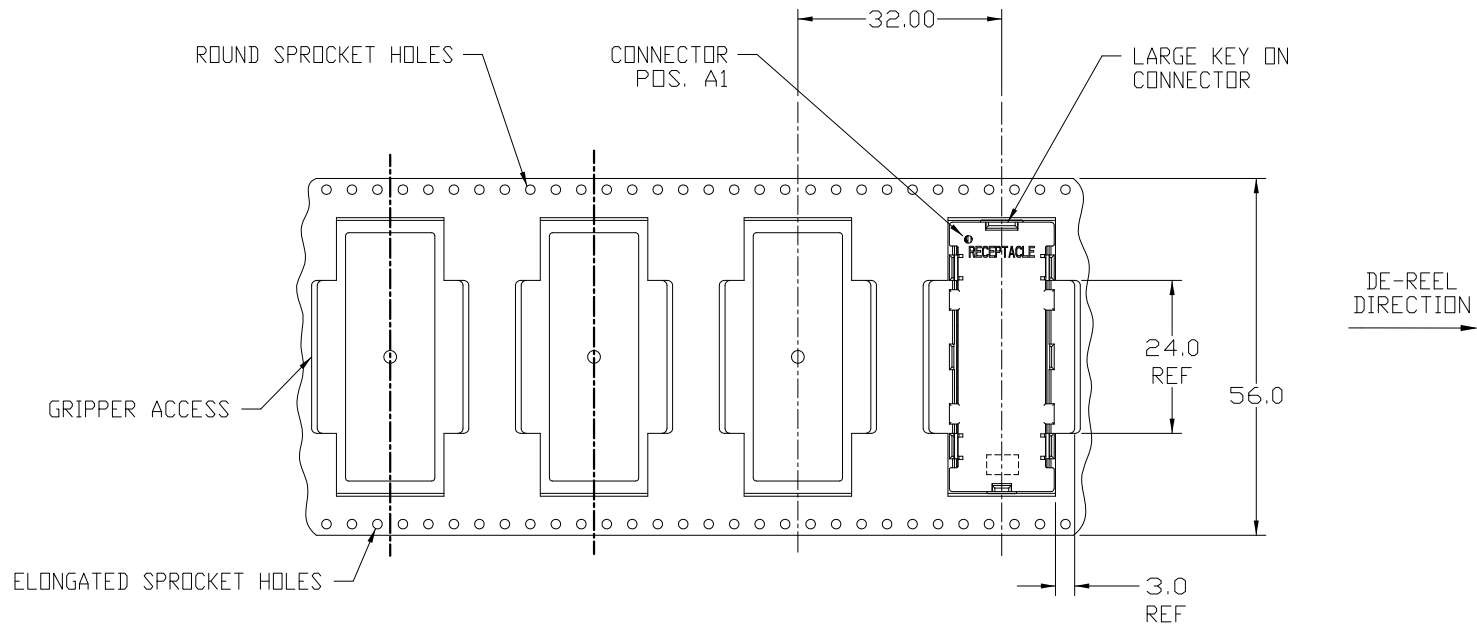
1 |

2 |

3 |

4

PRODUCT NUMBER
SEE TABLE-SHEET 2



TAPE & REEL PACKAGING
PER EIA 481-3
SCALE 1:1

mat'l. code		surface		tolerance		projection		product family	
SEE NOTE 1		ASME Y14.5		ASME Y14.5				MEG-ARRAY	
ltr	ecn no	dr	date	tolerances unless otherwise specified				title	
M				angles	X*3		MM		
					XX*13		5.5mm RECEPTACLE ASSEMBLY		
				0° ±2'	XXX*051		10 X 30 = 300 POSITIONS		
							scale 1:1		
		dr	D. WAUGHEN	1999-03-11			dwg no		
		engr	D. HARPER	1999-03-11			sheet 4 of 4		
		chr	D. HARPER	1999-03-11			size		
		appd	D. HARPER	1999-03-11			A4		
sheet index	revision sheet						type CUSTOMER Drawing		